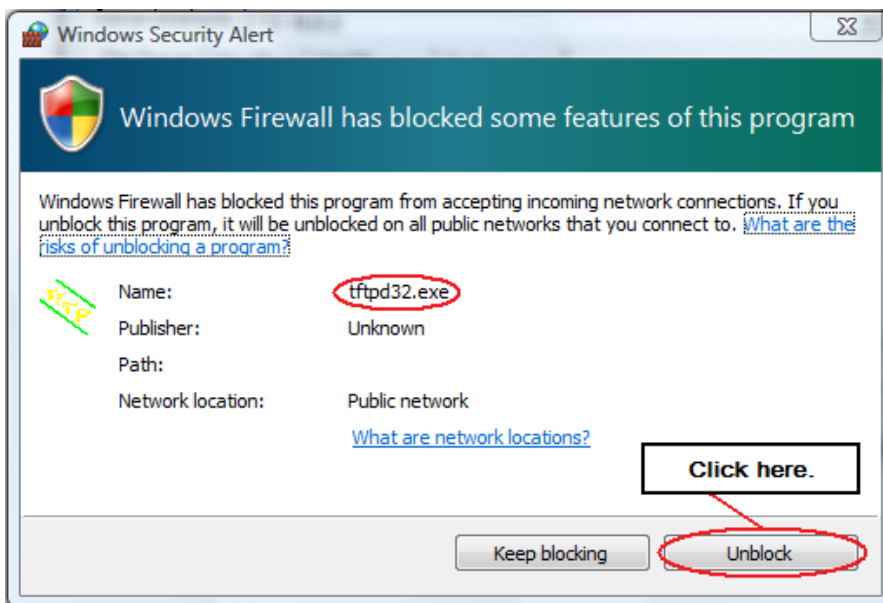
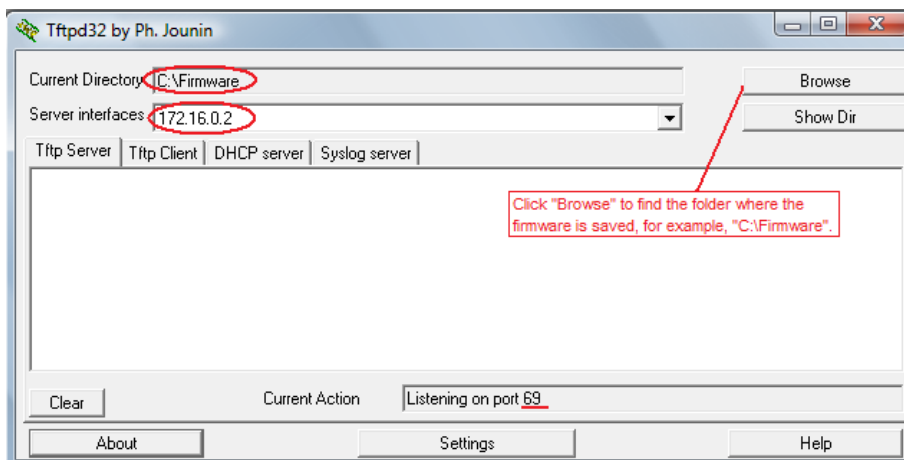


Step by step to force reload MB5000

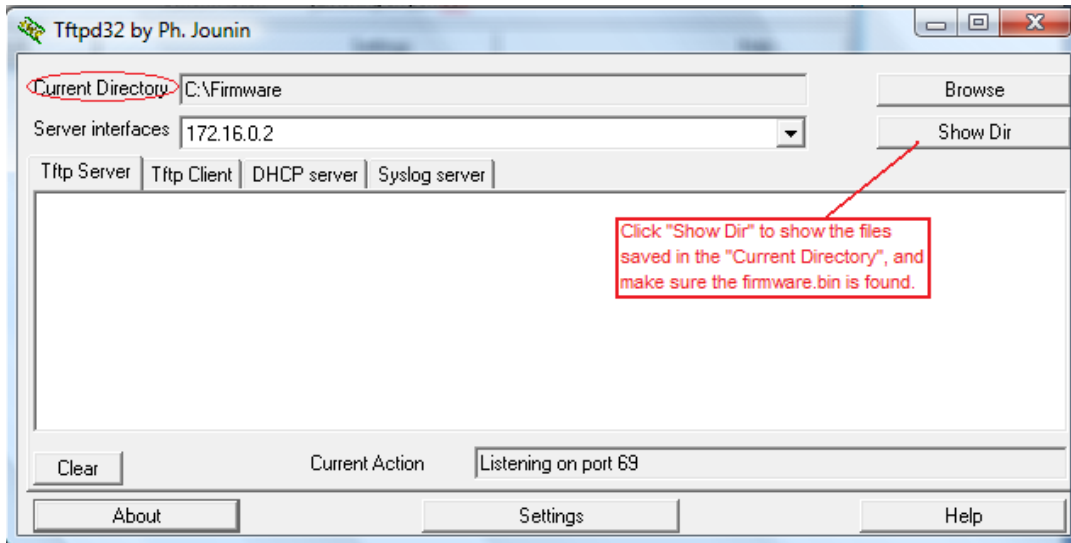
1. Set your computer's IP address to 172.16.0.2 (see also "How to change the IP address" description below);
2. Download the TFTP server software (<http://tftpd32.jounin.net/download/tftpd32.273.zip>) and install it on your computer. (a TFTP server software is also included in the CD-ROM come with MB5000 box).
3. Download and save the firmware to "firmware.bin", and save to the root directory of TFTP server, and connect your MB5000 router with your computer with Ethernet cable.
4. Turn off your firewall temporary or allow TFTP service in your firewall settings, and launch TFTP server.



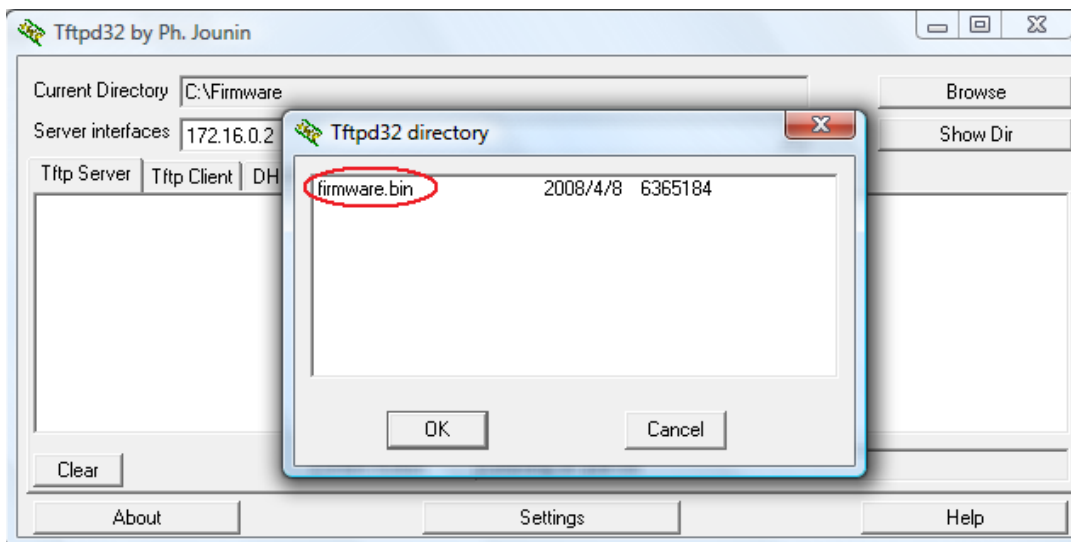
5. Check the settings on the TFTP server software.
 - 5.1 Select the folder that contains the firmware file.



5.2 Click “Show Dir” button to make sure the firmware file can be seen in the “Current Directory”.



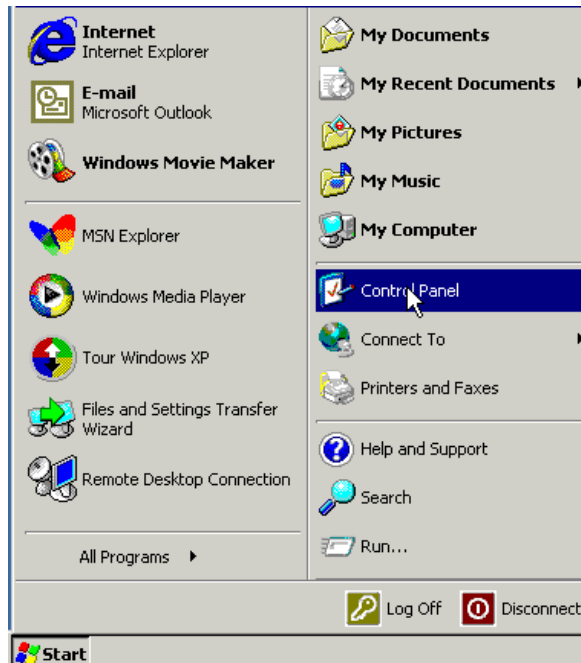
5.3 The “firmware.bin” can be seen.



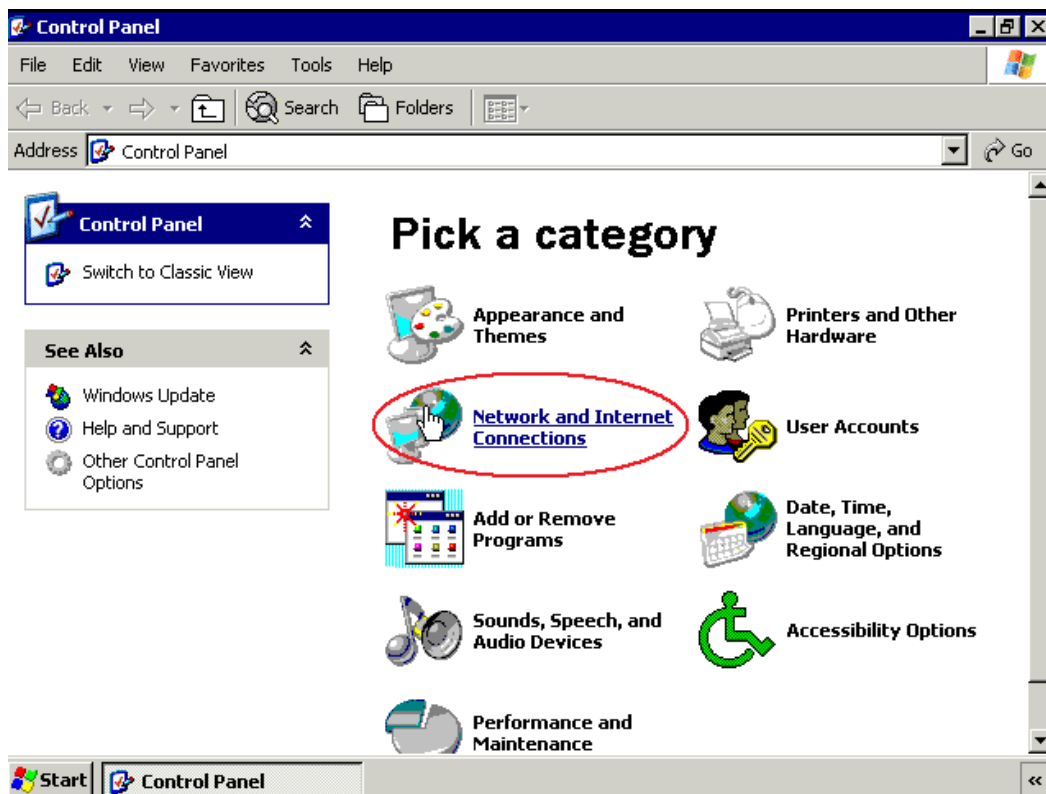
6. You can find the “Reset” and “Reload” button on the MB5000 box. After the environment is set up, you can hit the “Reset” button and then hit and hold the “Reload” button for about 30 seconds.
7. On the TFTP server’s log area, you can see the MB5000 will automatically download firmware from the TFTP server.

How to change the IP address of a network adapter in Windows 2000/XP

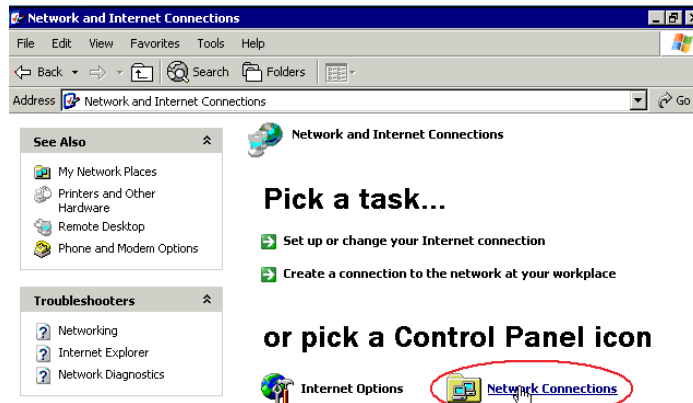
1. Log on to the client computer as Administrator or as Owner.
2. Click **Start**, and then click **Control Panel**.



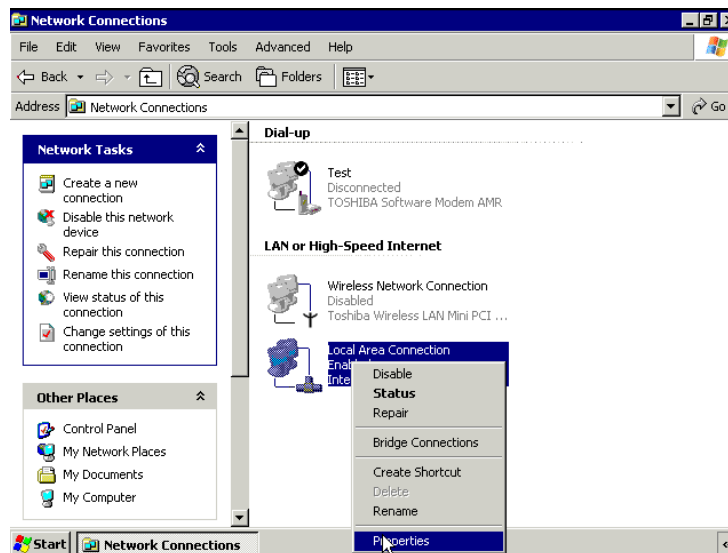
3. Click **Network and Internet Connections**.



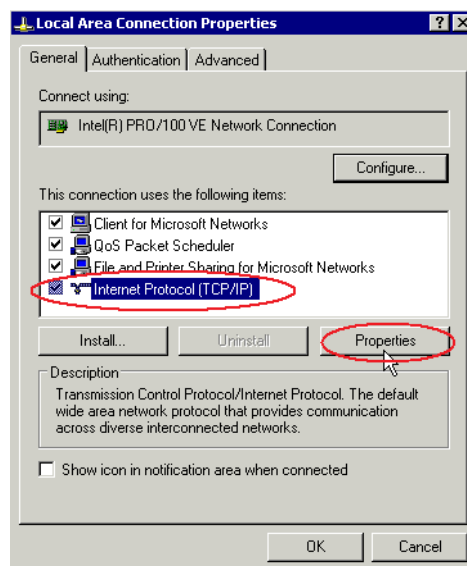
4. Click **Network Connections**.



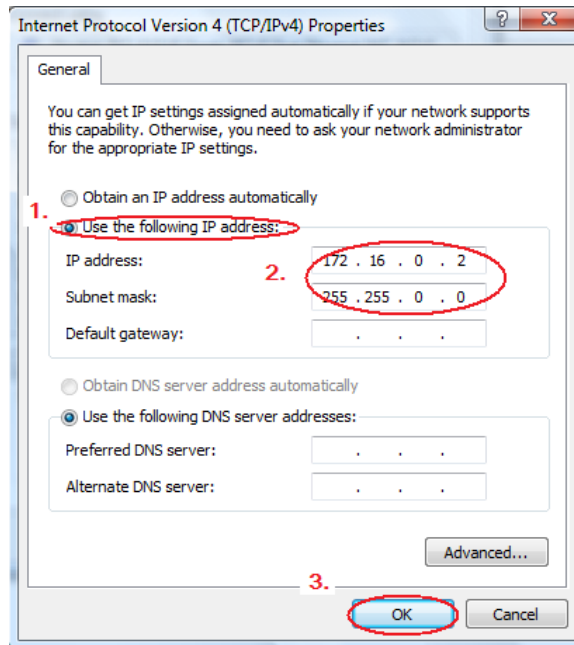
5. Right-click **Local Area Connection**, and then click **Properties**.



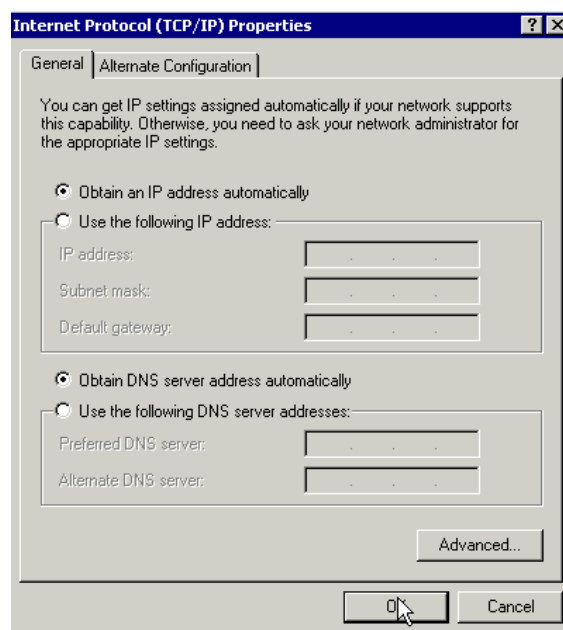
6. Click the **General** tab, click **Internet Protocol (TCP/IP)** in the **This connection** uses the following items list, and then click **Properties**.



7. In the **Internet Protocol (TCP/IP) Properties** dialog box, click **Use the following IP address**, then type 172.16.0.2 in the **“IP address”** box and 255.255.0.0 in the **“Subnet mask”** box, and then click **OK**.



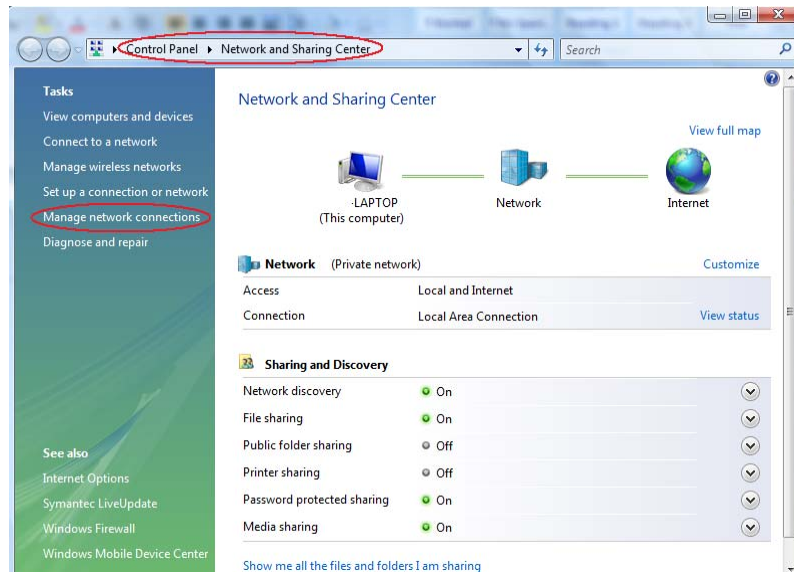
8. In the Local Area Connection Properties dialog box, click OK.
9. Quit Control Panel.
10. After the force reload, please come back here and change the settings back to **“Obtain an IP address automatically”** and **“Obtain DNS server address automatically”**.



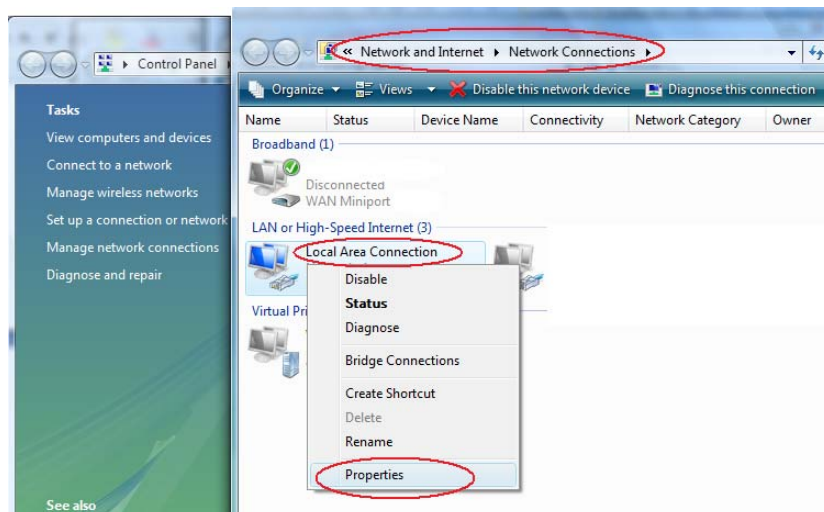
To view a video about how to configure the LAN adapter IP configuration:
http://www.topglobalusa.com/download/Change_IP_Address.wmv

How to change TCP/IP settings on Microsoft Windows Vista:

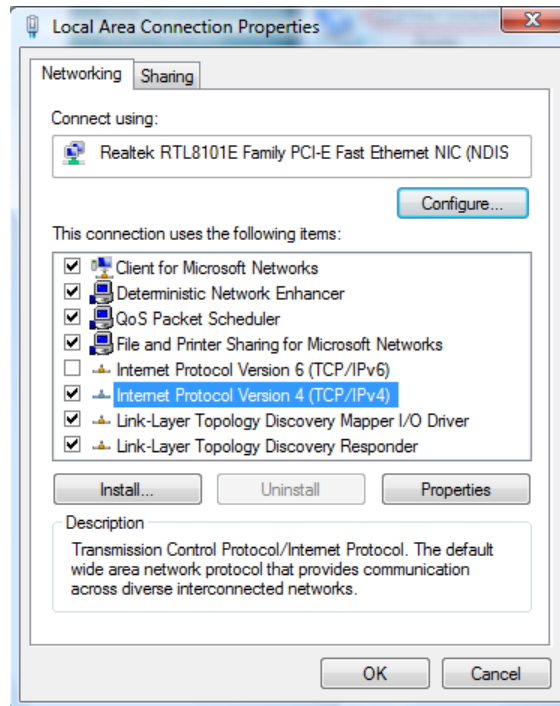
1. Open Network Connections by clicking the **Start** button, clicking **Control Panel**, clicking **Network and Internet**, clicking **Network and Sharing Center**, and then clicking **Manage network connections**.



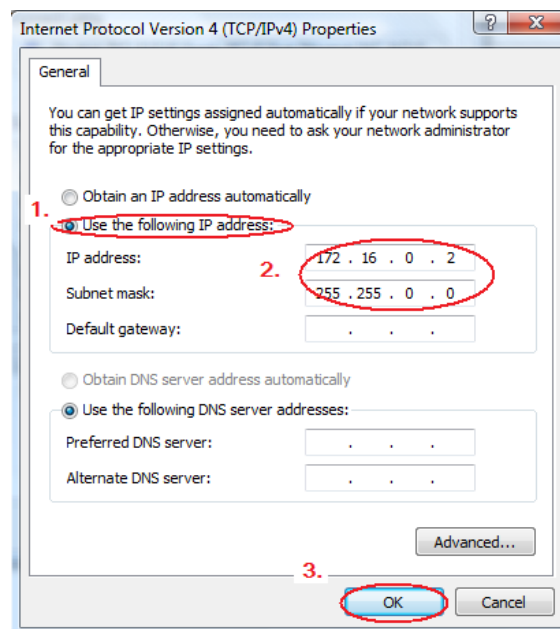
2. Right-click the connection that you want to change, and then click **Properties**.
 If you are prompted for an administrator password or confirmation, type the password or provide confirmation.



3. Click the **Networking** tab. Under **This connection uses the following items**, click **Internet Protocol Version 4 (TCP/IPv4)**, and then click **Properties**.



4. To specify IPv4 IP address settings, click **Use the following IP address**, and then, in the **IP address**, **Subnet mask** boxes, type the IP address settings, then click “**OK**” button:



Note: After the force reload, please come back here and change the settings back to “**Obtain an IP address automatically**” and “**Obtain DNS server address automatically**”.

How to check the IP address

1. Click **Start**, and then click **Run**.
2. In the **Open** box, type **cmd**, and then click **OK**.
3. At the command prompt, type **ipconfig**, and then press ENTER.
4. The network adapter is assigned an IP address, and a message similar to the following message appears:

Windows IP Configuration

Ethernet adapter Local Area Connection:

IP Address. : 172.16.0.2
Subnet Mask : 255.255.0.0
Default Gateway :

5. Type **exit** and then press ENTER to quit the command prompt.



TOP Global USA, Inc.

ADDR: 21072 Bake Parkway, Suite 106, Lake Forest, CA
92630, USA

TEL: +1 888 Top Glob

+1 949 586 7046

FAX: +1 949 380 4128

<http://www.topglobalusa.com/>