

## Initialize the MB6000 Unit

1. Connect **MB6000** with your computer. There are two ways to connect **MB6000** with your computer:
  - I. Connect your computer to **MB6000** using an Ethernet cable. Verify your computer is set with “Automatic IP” configuration. To check if “Automatic IP” is set, go to “Start” then to “Settings”, then to “Network and Dial-up Setting” and then right click on your “Local Area Connection”. You should see the window shown in Figure 1.

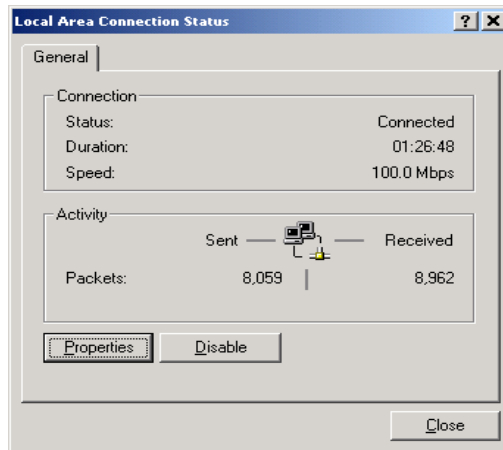


Figure 1

II. Click on the “Properties” button and the window as shown in Figure 2 appears.

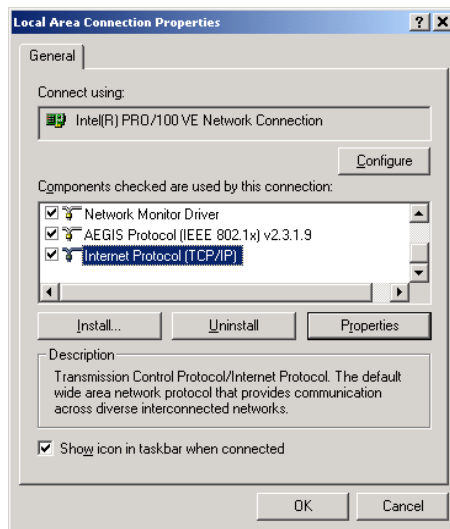


Figure 2

III. Scroll down in the properties window until you see “Internet Protocol (TCP/IP)” and highlight it by clicking on it and then click the “Properties” button. You should see the window shown in Figure 3. Verify the “Obtain an IP address automatically” is set. If it isn’t, click on the button next to it and then click the “OK” button.

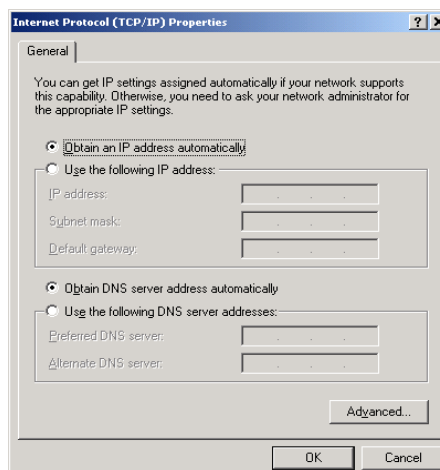


Figure 3

2. Validate that your computer has an IP address from the **MB6000** by opening a “Command Prompt” window (go to “Start”, then “Run” and type in “cmd” and press “Enter”). Once the window appears (see figure 4), type “ipconfig /all”. Verify the “IP address” is in the range of “172.16.0.x” where “x” is from 2 to 200”. If it isn’t, type “ipconfig /renew”.

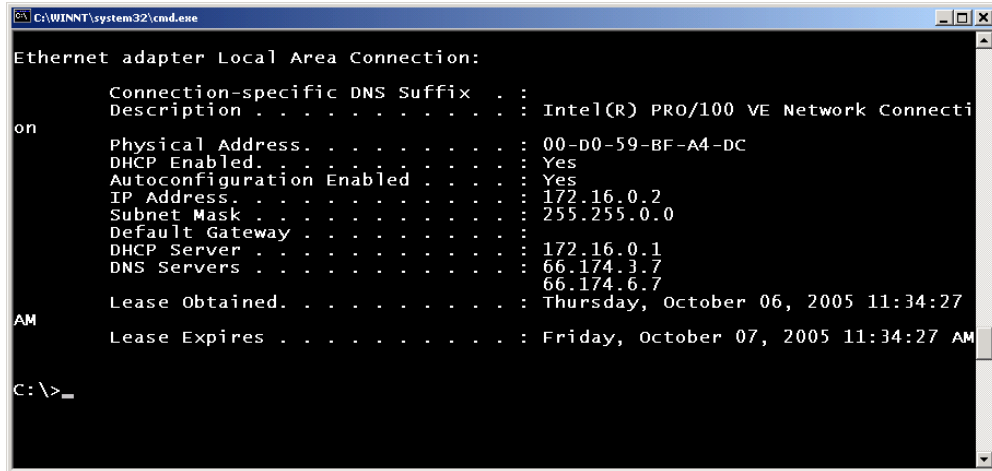


Figure 4

3. Then open the web browser and enter <http://172.16.0.1> and press “Enter”. The **MB6000** login screen (Figure 5) appears. Enter the username/password (default is **public/public**), and click OK. The web configuration screen (Figure 6) appears.



Figure 5 Login Page