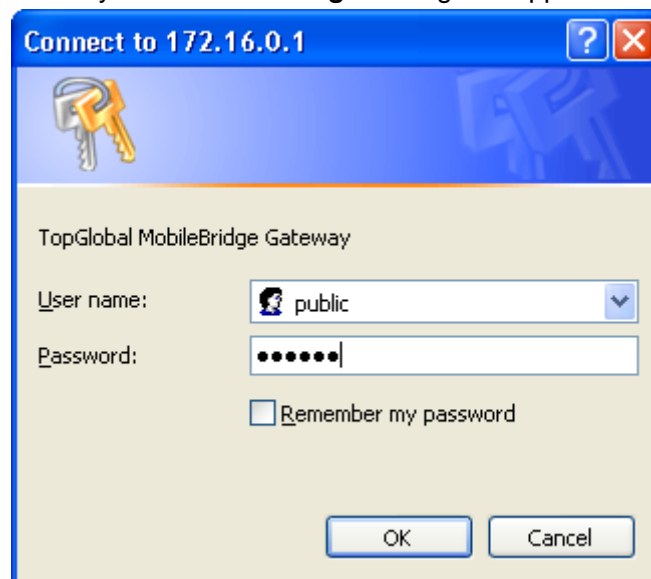


Upgrade MB6800

How to upgrade the MB6800 software

MB6800 software can be easily upgraded from its webGUI. MB6800 embeds a WEB server for web-based management. This application note will show you how to upgrade MB6800 software from webGUI.

1. Download the latest firmware from Top Global website www.topglobalusa.com to your host PC. User can also get technical support from Top Global USA, Inc. by email or phone.
2. You will need an Ethernet connection between MB6800 and your computer. You can connect your computer to the MB6800's "LAN" port with a "crossover" Ethernet cable. Or you can connect your computer with MB6800 via Wi-Fi connection.
3. Open your browser and enter the MB6800's IP address in the address bar. The default IP address of MB6800 is 172.16.0.1.
4. Press the **ENTER** key. The MB6800 **Login** dialog box appears.



Note:

Default user name: public

Default password: public

5. After you input the right username and password, the home page of MB6800 web site will appear
6. In the page System -> Firmware:

System: Firmware


Choose the firmware file to be uploaded.
Click "Upgrade firmware" to start the upgrade process.

Firmware file:

Warning:
DO NOT abort the firmware upgrade once it has started. The gateway will reboot automatically after storing the new firmware. The configuration will be maintained.

7. Enter the location of the firmware file or click the **Browse** button to find the file.
8. Click the **Upgrade Firmware** button and the firmware will be uploaded to the MB6800. After the firmware uploading finished, the following page will waiting for your confirm. Click "OK" to confirm, and the new firmware will be upgraded.

System: Firmware

 The firmware has been uploaded and verified successfully.

Choose the firmware file to be uploaded.
Click "Upgrade firmware" to start the upgrade process.

Firmware file:

Current Version	v1.1.24
New Version	v1.1.26

Are you sure to upgrade the firmware ?

Warning:
DO NOT abort the firmware upgrade once it has started. The gateway will reboot automatically after storing the new firmware. The configuration will be maintained.



Note:

During the upgrade process, the Power LED is blinking with amber color. The device will reboot after the firmware upgrade is completed.

9. Congratulations! Your MB6800 has been upgraded to the latest version software.



Note:

You need to reset MB6800 to the factory after upgrading MB6800. Go to the page System->Factory defaults:

System: Factory defaults

If you click "Yes", the gateway will be reset to factory defaults and will reboot immediately. The entire system configuration will be overwritten. The LAN IP address will be reset to 172.16.0.1, the system will be configured as a DHCP server, and the username and password will be set to 'public'.

Are you sure you want to proceed?

Click the **Yes** button to reset all configurations to their factory default values.